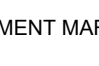
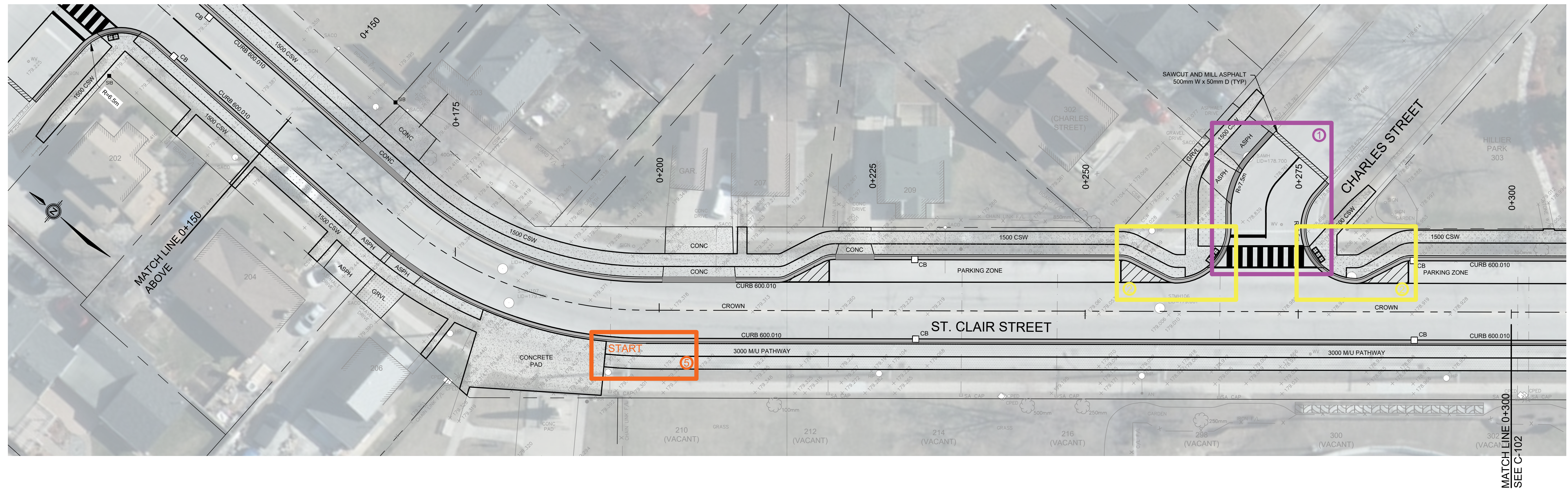
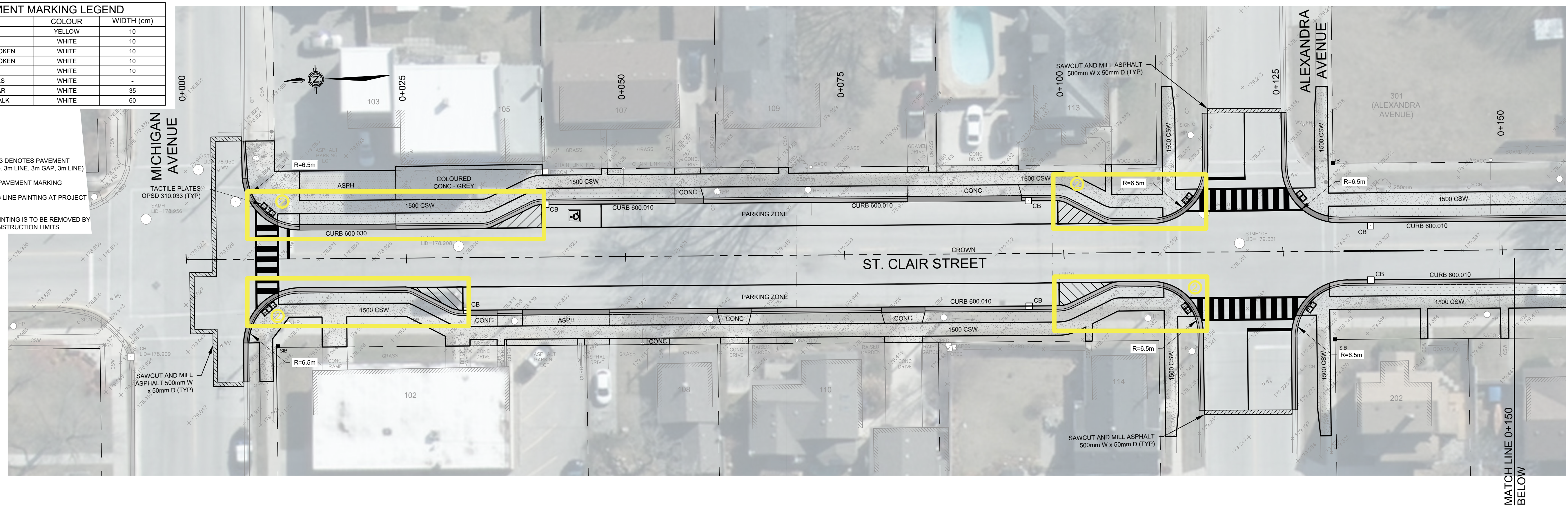


PAVEMENT MARKING LEGEND			
ID.	TYPE	COLOUR	WIDTH (cm)
1	SOLID	YELLOW	10
2	SOLID	WHITE	10
3	3 - 3 - 3 BROKEN	WHITE	10
4	3 - 6 - 3 BROKEN	WHITE	10
5	HATCH	WHITE	10
6	SYMBOLS	WHITE	-
7	STOP BAR	WHITE	35
8	CROSSWALK	WHITE	60

- NOTES:**
- 3 - 3 - 3, 3 - 6 - 3, 3 - 9 - 3 DENOTES PAVEMENT MARKING SPACING (i.e. 3m LINE, 3m GAP, 3m LINE)
 - USE  TO DENOTE PAVEMENT MARKING
 - MATCH INTO EXISTING LINE PAINTING AT PROJECT LIMITS
 - ALL EXISTING LINE PAINTING IS TO BE REMOVED BY GRINDING WITHIN CONSTRUCTION LIMITS



NOTES

SCALES
 PLOTTED SIZE - 22" x 34"
 1:250
 PLOTTED SIZE - 11" x 17"
 1:500

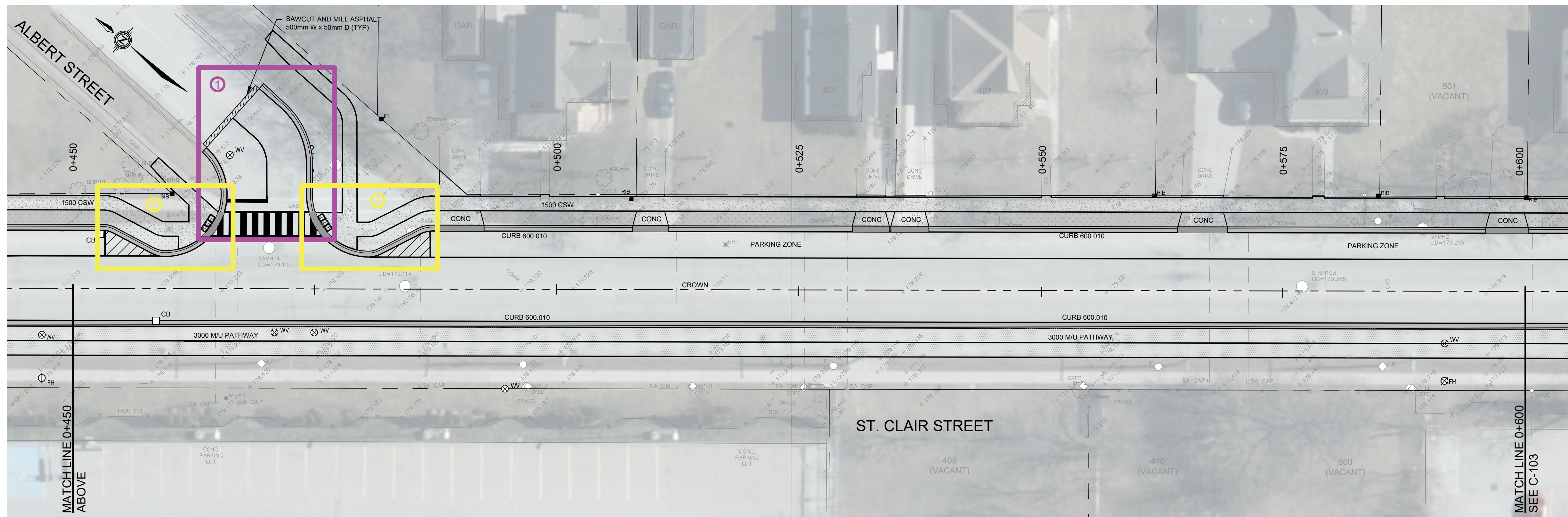
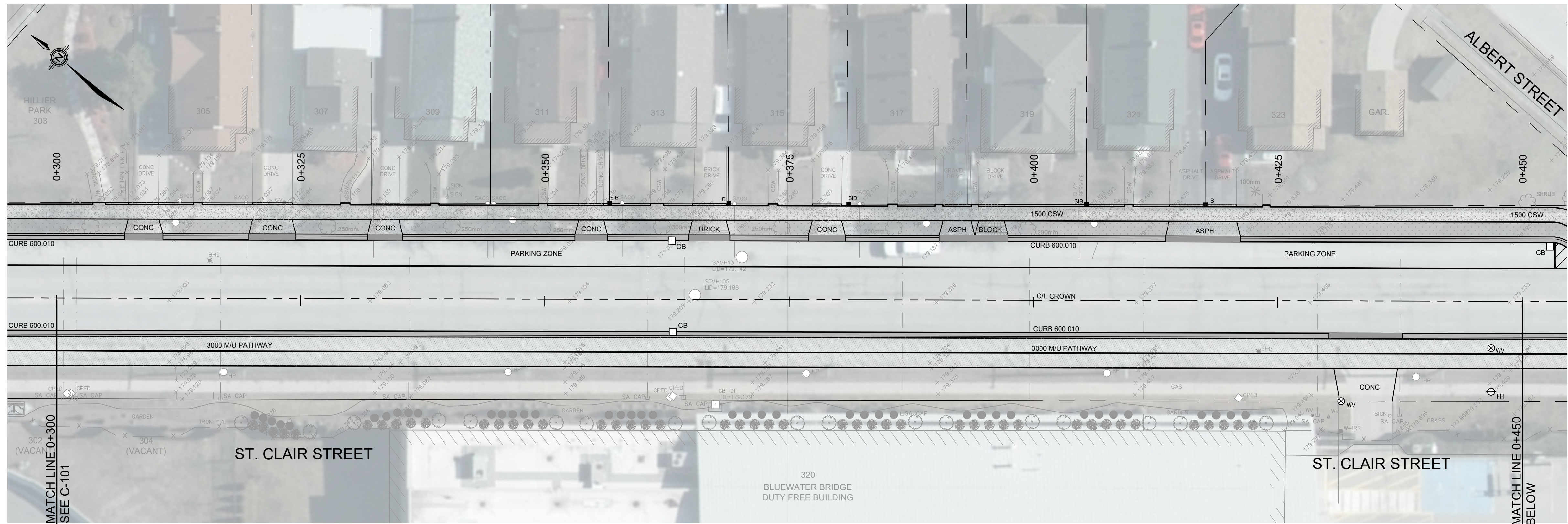
MIGENGINEERING

MIG PROJECT No.: 11179.00

NO.	REVISIONS	DATE	DRAWN	DESIGNED	CHECKED	APPROVED
0.2	RE-ISSUED FOR COMMENT	2023.01.05	DS/LC	LC	DJ	LC
0.1	ISSUED FOR COMMENT	2022.11.29	DS/LC	LC	DJ	LC

VILLAGE OF POINT EDWARD
 ST. CLAIR STREET
 PLAN & ALIGNMENT - 0+000 TO 0+300

DRAWING NUMBER
C-101
 REVISION
 0.2



NOTES

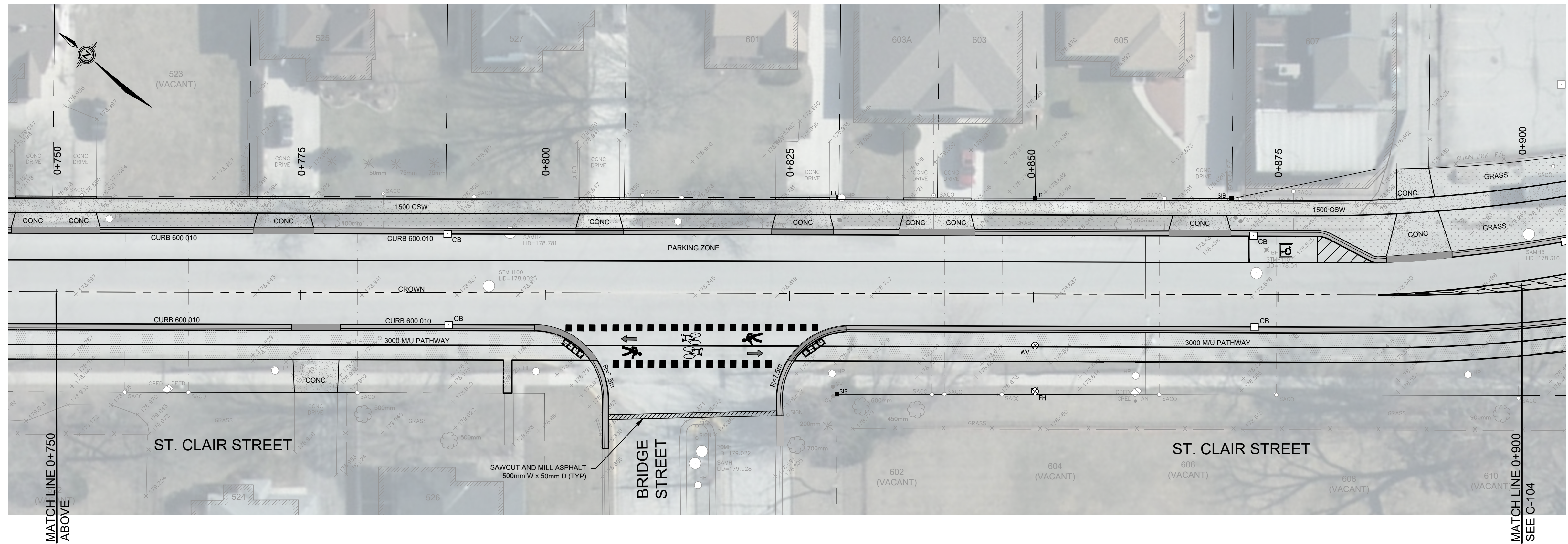
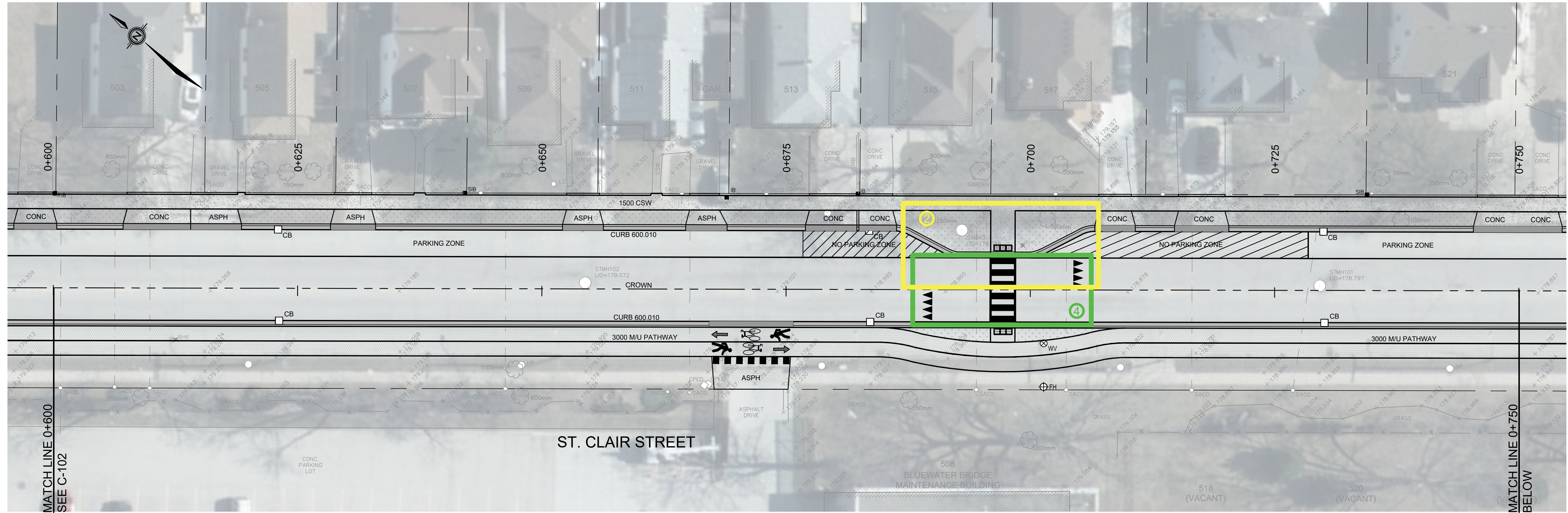
SCALES
 PLOTTED SIZE - 22" x 34"
 1:250
 PLOTTED SIZE - 11" x 17"
 1:500

MIGENGINEERING
 MIG PROJECT No.: 11179.00

NO.	REVISIONS	DATE	DRAWN	DESIGNED	CHECKED	APPROVED
0.2	RE-ISSUED FOR REVIEW	2023.01.05	DS/LC	LC	DJ	LC
0.1	ISSUED FOR REVIEW	2022.11.29	DS/LC	LC	DJ	LC

VILLAGE OF POINT EDWARD
 ST. CLAIR STREET
 PLAN & PROFILE - 0+300 TO 0+600

DRAWING NUMBER
C-102
 REVISION
 0.2



NOTES

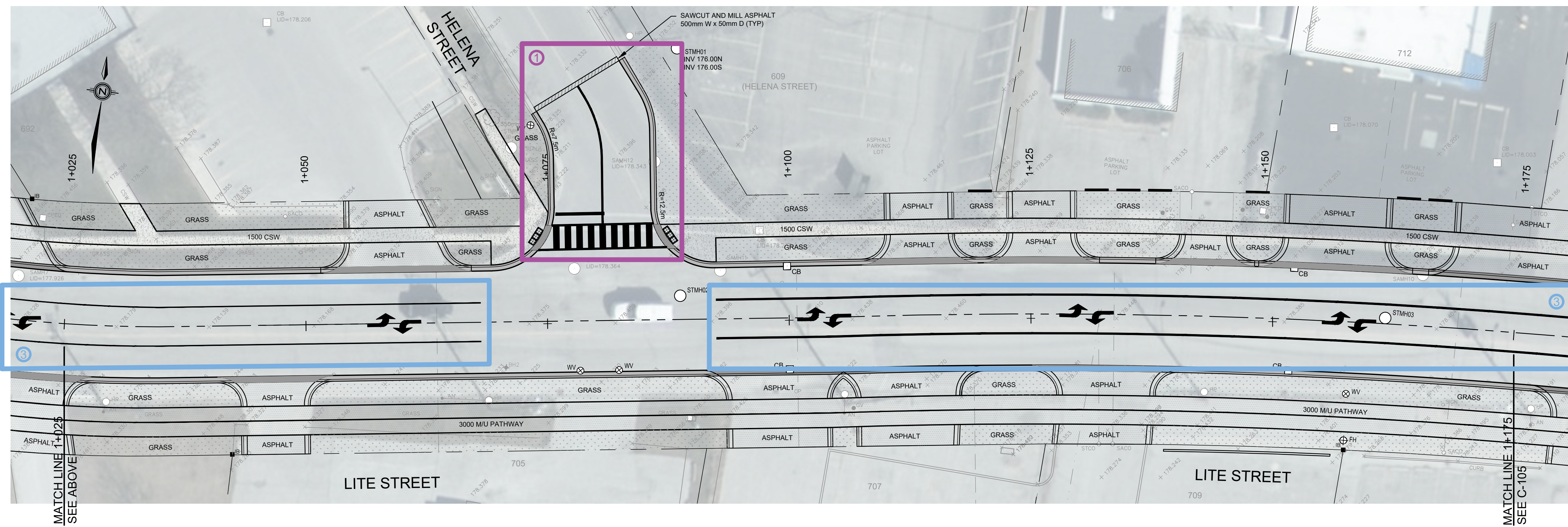
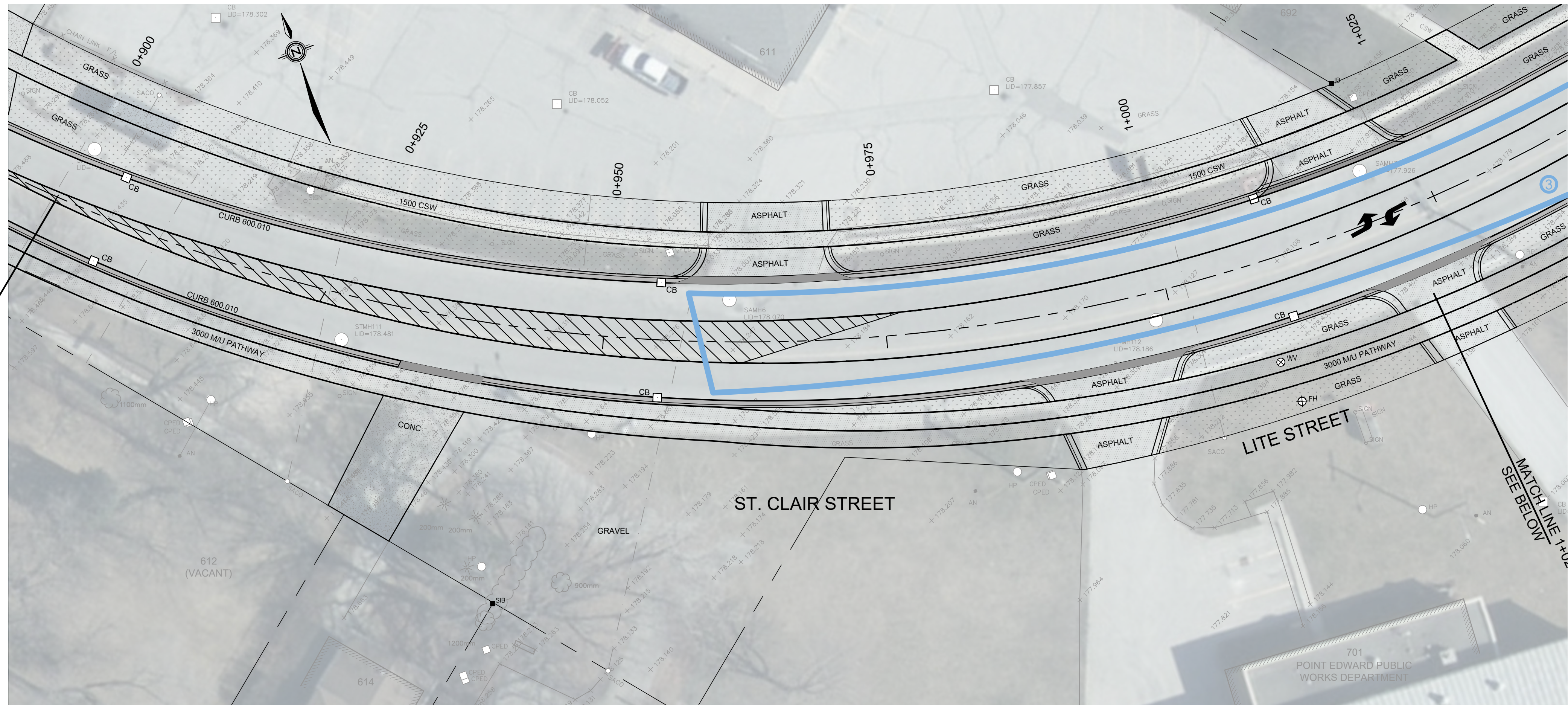
SCALES
 PLOTTED SIZE - 22" x 34"
 1:250
 PLOTTED SIZE - 11" x 17"
 1:500

MIGENGINEERING
 MIG PROJECT No.: 11179.00

NO.	REVISIONS	DATE	DRAWN	DESIGNED	CHECKED	APPROVED
0.2	RE-ISSUED FOR REVIEW	2023.01.05	DS/LC	LC	DJ	LC
0.1	ISSUED FOR REVIEW	2022.11.29	DS/LC	LC	DJ	LC

VILLAGE OF POINT EDWARD
 ST. CLAIR STREET
 PLAN & ALIGNMENT - 0+600 TO 0+900

DRAWING NUMBER
C-103
 REVISION
 0.2



NOTES

SCALES
 PLOTTED SIZE - 22" x 34"
 1:250
 PLOTTED SIZE - 11" x 17"
 1:500

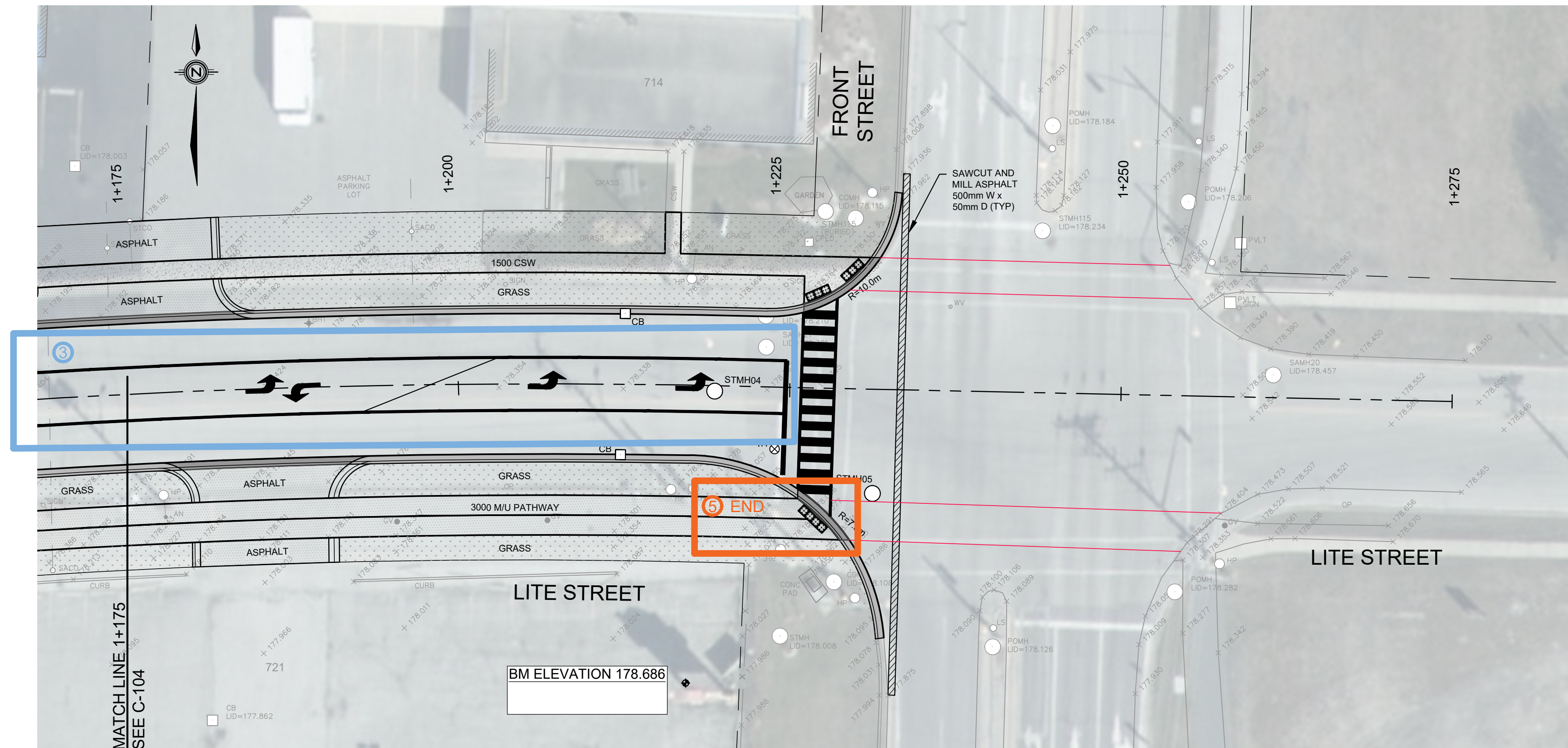
MIGENGINEERING

MIG PROJECT No.: 11179.00

NO.	REVISIONS	DATE	DRAWN	DESIGNED	CHECKED	APPROVED
0.2	RE-ISSUED FOR REVIEW	2023.01.05	DS/LC	LC	DJ	LC
0.1	ISSUED FOR REVIEW	2022.11.29	DS/LC	LC	DJ	LC

VILLAGE OF POINT EDWARD
 ST. CLAIR STREET
 PLAN & ALIGNMENT - 0+900 TO 1+175

DRAWING NUMBER
C-104
 REVISION
 0.2



- LEGEND**
- ① 90° INTERSECTIONS
 - ② BULB-OUTS
 - ③ LEFT-HAND TURN
 - ④ RAISED MID-BLOCK CROSSING
 - ⑤ MULTI-USE PATHWAY

NOTES

SCALES
 PLOTTED SIZE - 22" x 34"
 1:250
 PLOTTED SIZE - 11" x 17"
 1:500

MIGENGINEERING
 MIG PROJECT No.: 11179.00

NO.	REVISIONS	DATE	DRAWN	DESIGNED	CHECKED	APPROVED
0.2	RE-ISSUED FOR REVIEW	2023.01.05	DS/LC	LC	DJ	LC
0.1	ISSUED FOR REVIEW	2022.11.29	DS/LC	LC	DJ	LC

VILLAGE OF POINT EDWARD
ST. CLAIR STREET
PLAN & ALIGNMENT - 1+175 TO 1+250

DRAWING NUMBER
C-105
 REVISION
 0.2